

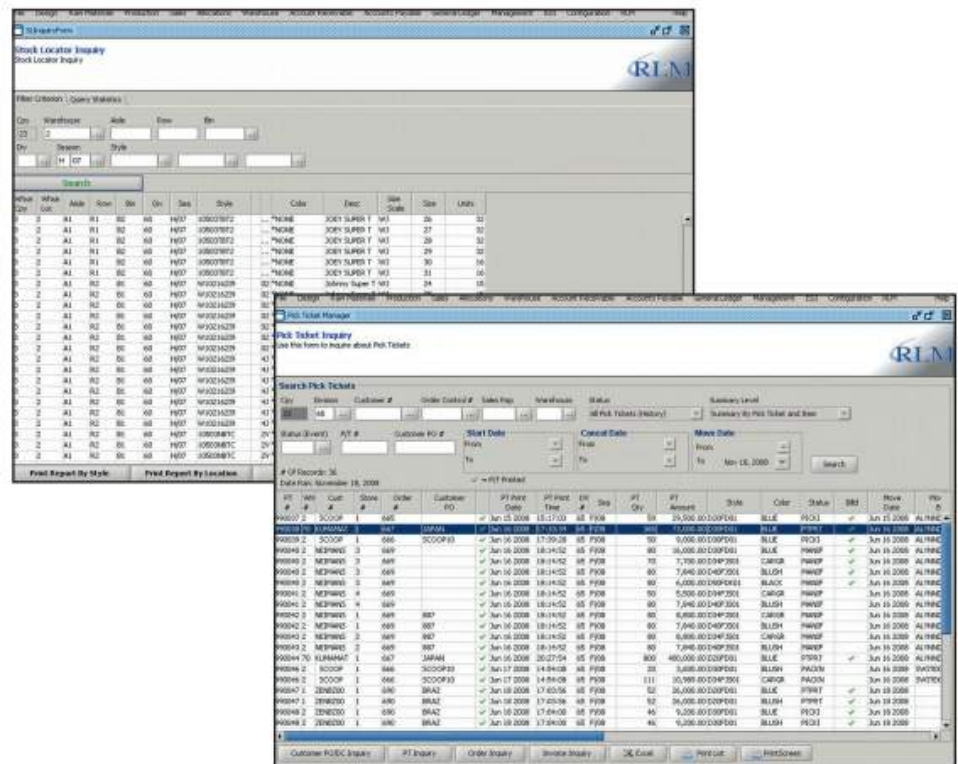


MAJOR FEATURES OF RLM WMS:

- Radio Frequency Handheld Capable
- Stock Locator Inventory
- Scan Transfer
- Cycle Counting
- Transactional History Reporting
- UCC 128 Label Compliant
- UPS World Shipment Integration
- Pallet Control Inbound/Outbound
- SKU Location Replenishment
- Outbound ASN Generation
- LJC Penney 753 754
- Pre-Pack Management
- Scan Packing
- Scan Receiving
- Scan Put Away
- Manifesting
- Full Physical Inventory
- Auto Re-routing

RLM WMS (Warehouse Management System) brings a new level of accuracy and efficiency to distribution operations. If you are looking to eliminate lost sales, costly overhead, returns, and inaccurate inventory, the **RLM WMS** software module is the solution for you.

By controlling user picking and packing operations, **RLM WMS** brings greater efficiency by eliminating time wasted by not knowing the location or how to package goods. Radio frequency (RF) handheld guns route warehousing personnel to locations for both selecting and putting away goods. **RLM WMS** gives you visibility into your inventory with real-time transactions.



RLM WMS is fully integrated with the **RLM software suite** and is available in either affordable On-Premise licensing, or Cloud-Based subscription with low startup costs.