

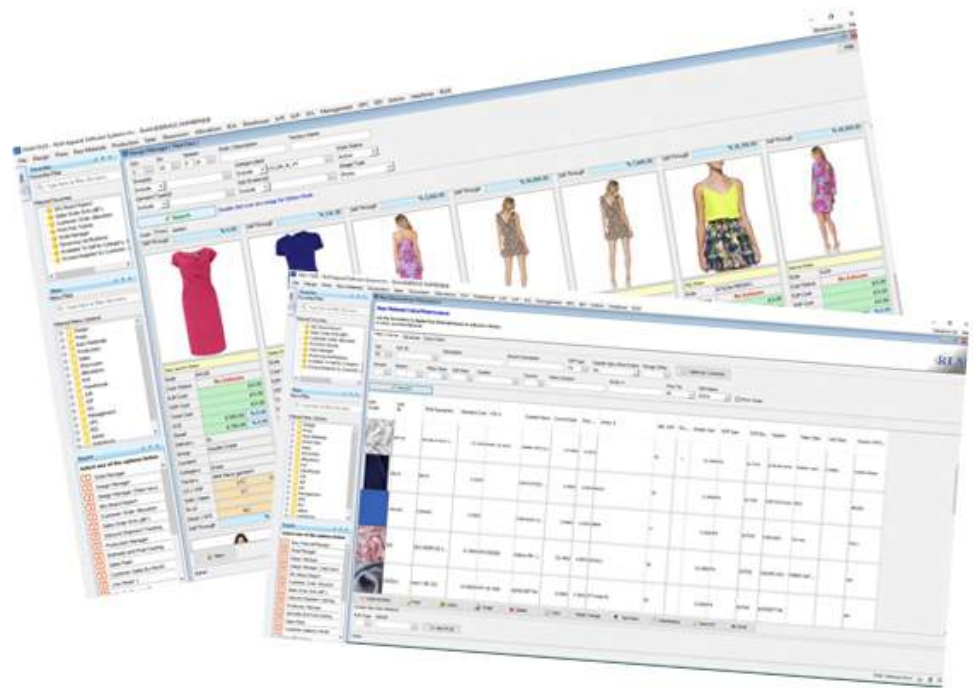


**MAJOR FEATURES OF RLM PLM:**

- Tech Pack Management
- View Images, Changes in Specs, Design History
- Vendor Collaboration
- Auto Spec Grading
- Sample Evaluation
- Sample Comments with Images
- Revision History of Product Specs
- Bill of Materials Tracking
- Raw Materials Management
- Email Capable
- Label Purchase Management
- Production Tracking
- Line List Generation
- Send Finished Goods Production
- Information Electronically to Import
- Freight Forwarders

With **RLM PLM**, you can effectively reduce time-to-market by streamlining communication with vendors. It provides a standardized means of communicating with design and product development departments, and increases management visibility into product development activities and costs. **The Product Lifecycle Management** software module enables everyone to make better informed and more timely decisions.

**RLM PLM** time and action calendars will track overseas production to ensure on-time production and delivery to customers. It also tracks labeling purchases to shore-to-shore and other vendors, and automates the process by communicating label needs electronically, specific to finished goods production needs.



The **RLM PLM** software module is fully integrated with the **RLM Apparel Software Suite** and is available in cloud-based subscription with low startup costs.